

AUTODESK®  
ARCHITECTURAL DESKTOP  
2006

Draw partner.



Autodesk®

# Designed for architects.

Autodesk Architectural Desktop makes AutoCAD better for architects so it fits right into your existing ways of working, providing the very best AutoCAD-based design and documentation productivity.

*VIZ Render is integrated with Architectural Desktop for stunning presentations.*

*Intelligent building objects allow you to create and manage schedules efficiently.*

*Flexible viewport shapes allow you to lay out your drawing sheets for greatest clarity and impact.*

*Sections, plans, elevations, and other drawings are generated automatically from the design.*

*Keynoting delivers consistency with your office standards and streamlines documentation.*

Project Information		Quantity	Style	W
Project Division ID	Project Level ID			
G1	G1 - GF	1	Door Entrance Wood-Alu	1.
G1	G1 - GF	1	Door Sliding Double - Alu	4.
G1	G1 - GF	2	Door Single - Wood	
G1	G1 - GF	3	Door Single - Wood	
G1	G1 - GF	1	Door Single - Alu	1.
G2	G2 - GF	1	Door Pocket - Wood	
G2	G2 - GF	3	Door Single - Wood	
G2	G2 - GF	1	Door Entrance Wood-Alu	1.
G2	G2 - GF	1	Door Single - Alu	1.

Autodesk Architectural Desktop's familiar AutoCAD working methods and interface enable you to get to work right away with minimal training. You can then implement increasingly powerful and effective features at your own pace. For example, you're working in the AutoCAD environment with traditional drafting methods at your disposal, but now using Architectural Desktop you can achieve faster documentation and automate tedious coordination tasks using intelligent building objects.

There are better things to do than search through endless files, manually updating project standards as they change over the course of a project. Architectural Desktop enables you to automate the maintenance and synchronization of

standards such as style definitions and display settings across an entire multi-file project. This means you get better documents and fewer quality problems.

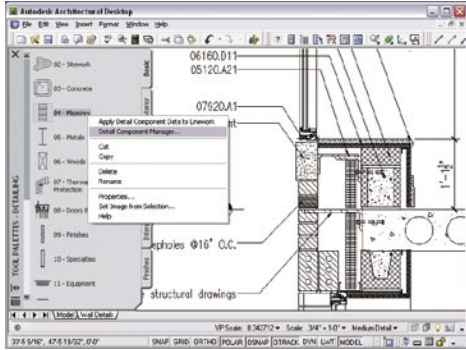
Because daily revisions are a fact of life in most design projects design changes need to be made easily and efficiently. Architectural Desktop ensures that the work you do in design is available for immediate use during the documentation process. Since your designs are linked to the project, any change you make will be reflected in the documentation—improving coordination and reducing errors. And with broad support for industry-leading formats and interoperability standards, collaboration with the extended team is easier—and better.

We've easily accelerated certain phases of our document production by 30 percent. My estimate is that we could see increases of up to 50 percent in ideal circumstances.

—John Moebes, AIA, Associate Principal, Good Fulton & Farrell Architects

### Immediate Productivity

Autodesk Architectural Desktop allows you to create drawings and schedules faster. The software also gives you more tools that automate tedious drafting tasks, making document coordination even easier. You get all the functionality of AutoCAD software plus powerful architectural design and drafting tools, including a 2D detailing toolkit that vastly accelerates the production of construction details.



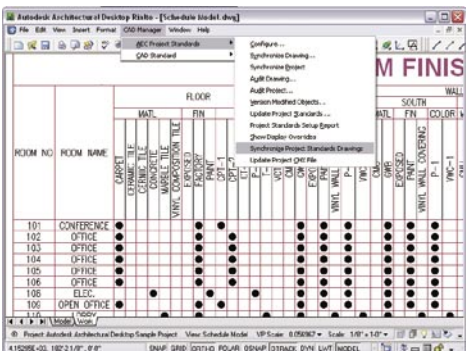
### Increased Efficiency

Increase efficiency by automating production of drawings and schedules. Because your design is linked to the construction documents, coordinating changes is easier and the entire documentation process is more efficient and of higher quality. The Project Navigator tracks your project's levels, drawings, Xref files, and other project items. It enables you to quickly and easily manage the building design and your construction documents.



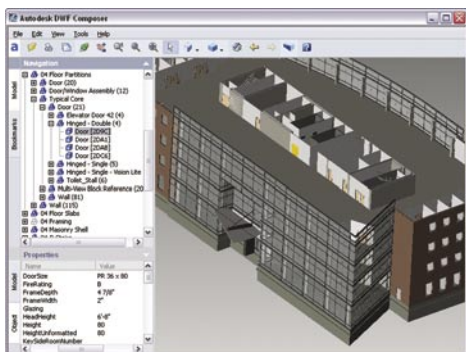
### Greater Flexibility

Autodesk Architectural Desktop uses your existing ways of working, allowing an easy and measured transition to more advanced features. Start with familiar AutoCAD-based features, and move forward at your own pace. New in Architectural Desktop 2006, Project Standards enable you to automate the maintenance and synchronization of standards such as style definitions and display settings across an entire multi-file project.



### Smoother Collaboration

Smooth collaboration is crucial when working with multiple team members—within the office or across time zones. Autodesk Architectural Desktop enables you to share design data using the DWG file format and file-based collaboration. Integrated VIZ Render gives you rapid visualization for design presentation and collaboration. Exchange intelligent design information with engineers using Autodesk® Revit® Structure and Autodesk® Building Systems. Publish designs, including Materials and Object Properties, in 2D and 3D, using the Autodesk® DWF™ (Design Web Format™) for convenient, secure sharing of your designs.



# More than just software.

Autodesk offers collaboration, subscription, consulting, and training services to give you the best possible return on your investment in Autodesk® technology.

## Share Complex Design Data with DWF

When you need to share complex design data, only Autodesk® DWF™ (Design Web Format™) file format will do. Use the DWF format to securely view, print, and redline your design documents. Learn more at [www.autodesk.com/dwf](http://www.autodesk.com/dwf).

## Get Seamless Project Collaboration with Autodesk Buzzsaw

When you need to manage an entire project lifecycle efficiently, you need the Autodesk® Buzzsaw® project collaboration service. Get clear, real-time visibility into the status of your entire portfolio of projects. Learn more at [www.autodesk.com/buzzsaw](http://www.autodesk.com/buzzsaw).

## Stay Up to Date with Autodesk Subscription

Autodesk® Subscription is a complete software, support, and training offering that gives you easy access to the latest Autodesk product releases and upgrades. Learn more at [www.autodesk.com/subscription](http://www.autodesk.com/subscription).

## Get Experienced Professional Consulting

Our experienced industry professionals can guide you through setup, rollout, and integration of your Autodesk software. Learn more at [www.autodesk.com/consulting](http://www.autodesk.com/consulting).

## Customize Training to Meet Your Needs

Autodesk professional trainers work with you to create a one to two day custom training program that meets the specific needs of your team. Learn more about Autodesk custom training programs at [www.autodesk.com/archdesktop-training](http://www.autodesk.com/archdesktop-training).

## Purchase Autodesk Architectural Desktop

Contact your Autodesk Authorized Reseller to purchase Autodesk Architectural Desktop. To locate the nearest reseller visit [www.autodesk.com/reseller](http://www.autodesk.com/reseller). Learn more about Architectural Desktop at [www.autodesk.com/archdesktop](http://www.autodesk.com/archdesktop).

## Key Product Features

### Immediate Productivity

- All the AutoCAD drafting and editing tools are available
- Detailing feature accelerates the drafting of 2D construction details
- Project Tool Palettes help you organize and streamline your working environment
- Automate tedious architectural drafting tasks

### Increased Efficiency

- Project Navigator integrates your multi-file project into a single manageable working environment
- Display Themes present your design according to non-graphic data
- Curtain Wall tools allow you to create complex curtain wall designs
- Edit-in-View lets you work easily in non-plan views
- Heads-Up Display lets you work directly on your design away from the Command Line

### Greater Flexibility

- Project Standards automate the maintenance and synchronization of standards across your multi-file project
- Object Conversions allow you to convert one object type for another
- Network Installation Wizard

### Smoother Collaboration

- Publish to 3D DWF
- Integrated VIZ Render for photo-realistic presentations
- Terrain modeling with contour lines and freeform shapes, and ability to import LandXML data

### System Requirements

For a complete list of system requirements, visit [www.autodesk.com/archdesktop](http://www.autodesk.com/archdesktop).